

## IMPORTANT! READ AND FOLLOW THESE INSTRUCTIONS CAREFULLY AND KEEP FOR FUTURE REFERENCE

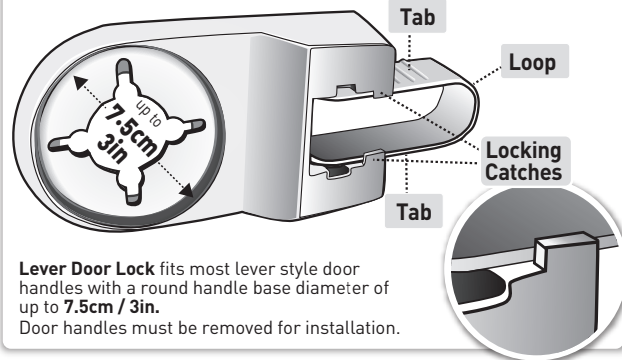
EASY TO FOLLOW INSTALLATION STEPS

### ⚠ WARNING



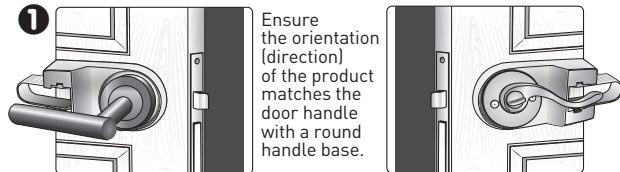
**ADULT ASSEMBLY REQUIRED.**  
**KEEP SMALL PARTS AWAY FROM CHILDREN DURING ASSEMBLY.**

There is no substitute for proper adult supervision.  
This product is only a deterrent.  
Discontinue use when child is able to open it.  
Indoor use only.  
Store these instructions safely out of reach of children during installations



**Lever Door Lock** fits most lever style door handles with a round handle base diameter of up to **7.5cm / 3in**.  
Door handles must be removed for installation.

### INSTALLATION



Look for the Dreamababy® range of Child Safety and Care Products.

X.01

Tee-Zed acknowledges that its customers may be entitled to statutory consumer guarantees and does not seek to exclude or limit them. These guarantees include that Tee-Zed's products are of acceptable quality. This Tee-Zed product is for the specific purpose detailed in the instructions and packaging and Tee-Zed considers use outside of that purpose to be abnormal use. To the maximum extent permitted by law, Tee-Zed does not accept any liability for damage:

- arising from abnormal use of the products;
- caused by installation or removal of the products other than in accordance with the supplied installation and removal instructions; or
- arising under the law of tort or contract.

Dreamababy® products by

Tee-Zed Products Pty Ltd  
PO Box 2022  
Bondi Junction NSW 1535  
**Australia**  
☎ +61 (0)2 9386 4000  
✉ info@tee-zed.com.au  
www.dreambaby.com.au

Tee-Zed Products (N.Z.) Ltd  
PO Box 64013  
Botany Town Centre  
Auckland **New Zealand**  
☎ +64 (0)9 274 8788  
✉ info@tee-zed.co.nz  
www.dreambaby.co.nz

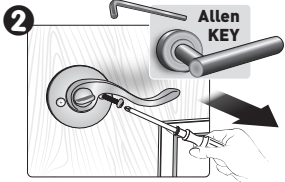
Tee-Zed Products Ltd  
PO Box 29227  
Dunfermline, KY12 2DN  
**United Kingdom**  
☎ +44 (0)844 800 9445  
✉ info@tee-zed.co.uk  
www.dreambaby.co.uk



Made in Dongguan, China.  
©2019 Tee-Zed Products Pty Ltd

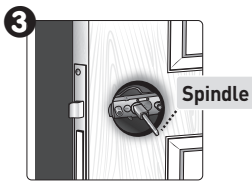


## INSTALLATION

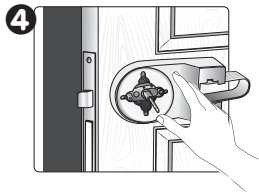


Unscrew the handle from the door on the side you need to have access blocked using the appropriate screw driver or Allen key. Store all parts safely.

**NOTE:** Leave the far side door handle (the door handle not being locked) in place, do not remove.



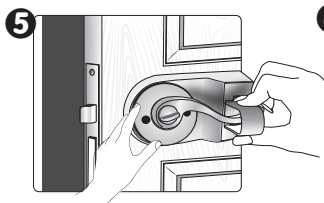
Door should look similar to this when handle is removed.



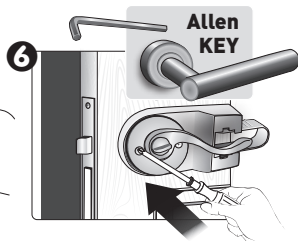
Position the Lever Lock, over the spindle and existing screw holes.



Ensure it is horizontal and level.



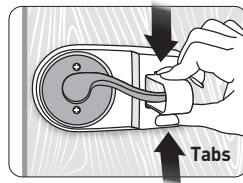
Check it is positioned so the Loop will fit over the door handle when assembled.



Before screwing in place, again test the Loop will fit evenly over your door handle.

## OPERATION

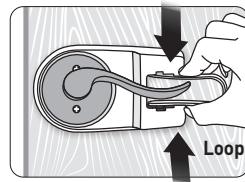
### To Engage



Squeeze side **Tabs** on the **Loop** and rotate up and over the door handle until the **Loop** locks into place past the **Locking Catches**. Release **Tabs**.

The **Loop** must not be able to rotate down.

### To Disengage



Squeeze in the **Side Tabs** on the **Loop** and rotate down over the door handle until the **Loop** locks in the down position. Release **Tabs**.

The **Loop** must not be able to rotate up.

**Note:** The Loop locks in both the up and down position to prevent children from Engaging or Disengaging the product.

When Lever Lock is Engaged in most cases you cannot open the door from the opposite side of the door, so door handles on both sides of door could be locked.

When blocking access to a room is not required, always ensure this item is Disengaged to avoid being locked in a room.

